

HUB O.L.D.	LI
130	42.4
135	42.4
142	45.9
148	45.9

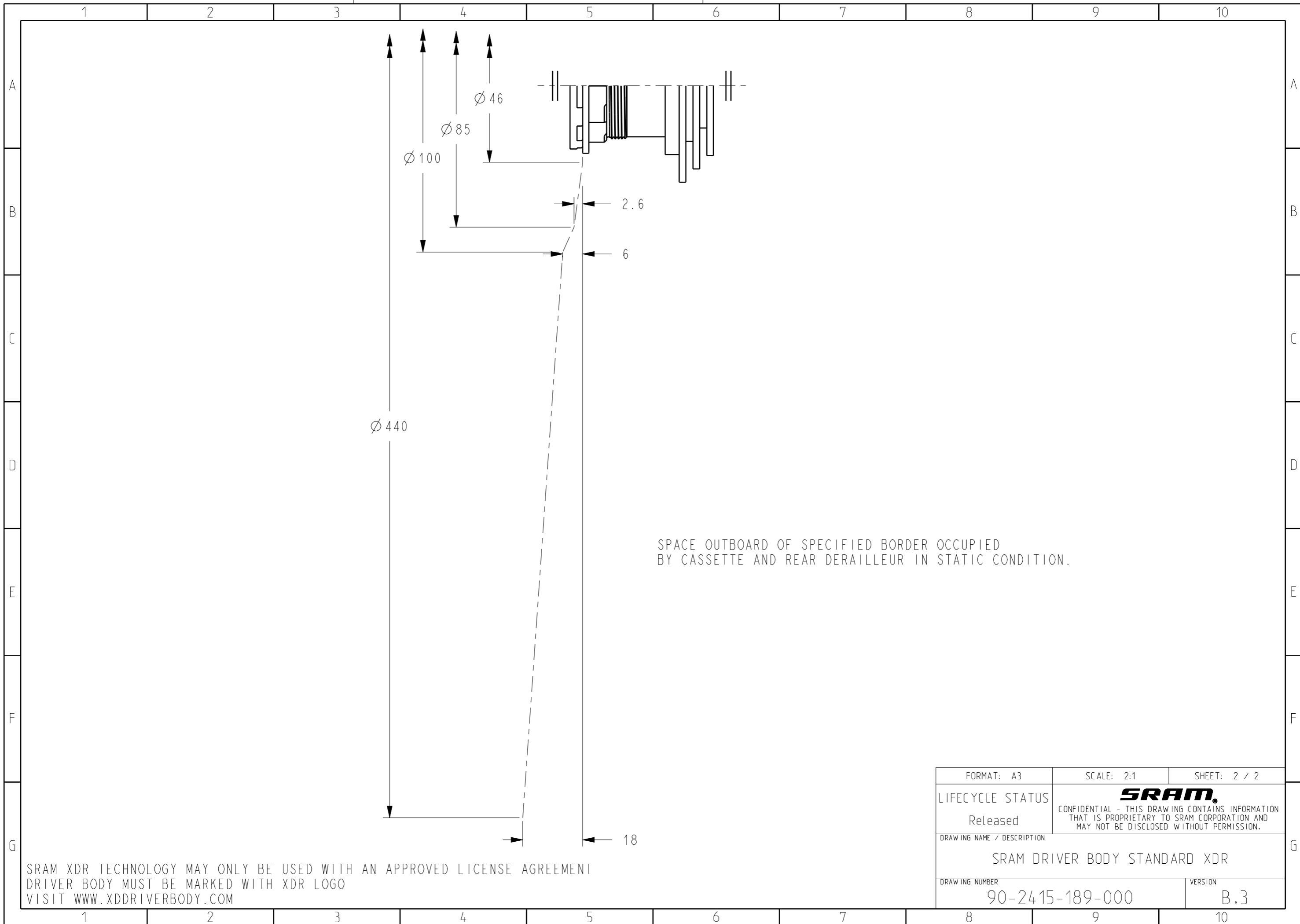
REV	REVISION RECORD
A	NEW RELEASE
B	ADD: SHEET 2 FOR DRIVETRAIN CLEARANCE CHANGE: 39.3 WAS 39.2 (A3)

- NOTES:
- GENERAL SURFACE FINISH: Ra1.6 MAX
 - DIMENSION OF CASSETTE BODY
 - SURFACE MAY BE BEARING OUTER RACE OUTER DIAMETER
 - THREAD PER ISO 965 OR DIN 13-22
 - XDR DRIVER BODY IS COMPATIBLE WITH SRAM XD CASSETTES BY USING SPECIFIED SPACER
 - DATUM [C] IS ROTATIONAL AXIS OF COMPLETE HUB ASSEMBLY IN INSTALLED STATE

DESIGNED BY: MATTHIAS REINBOLD		
FORMAT: A3	SCALE: 2:1	SHEET: 1 / 2
LIFECYCLE STATUS		 CONFIDENTIAL - THIS DRAWING CONTAINS INFORMATION THAT IS PROPRIETARY TO SRAM CORPORATION AND MAY NOT BE DISCLOSED WITHOUT PERMISSION.
Released		
DRAWING NAME / DESCRIPTION		
SRAM DRIVER BODY STANDARD XDR		
DRAWING NUMBER		VERSION
90-2415-189-000		B.3

ALL DIMENSIONS ARE mm	GEOMETRIC DIMENSIONING AND TOLERANCING TO BE INTERPRETED PER ASME Y14.5-2009
THIRD ANGLE PROJECTION	• INDICATES THE DIMENSION IS CRITICAL TO THE FORM, FIT OR FUNCTION OF THE PART OR PRODUCT
MASS (g)	UNTOLERANCED LENGTH DIMENSIONS (mm)
MATERIAL	LENGTH DIMENSIONS
	TOLERANCE
	from 0.5 up to 6 ± 0.1
	over 6 up to 30 ± 0.2
	over 30 up to 120 ± 0.3
	over 120 up to 400 ± 0.5
	UNTOLERANCED ANGLE DIMENSIONS ± 5°

SRAM XDR TECHNOLOGY MAY ONLY BE USED WITH AN APPROVED LICENSE AGREEMENT
 DRIVER BODY MUST BE MARKED WITH XDR LOGO
 VISIT WWW.XDRIVERBODY.COM



SPACE OUTBOARD OF SPECIFIED BORDER OCCUPIED BY CASSETTE AND REAR DERAILLEUR IN STATIC CONDITION.

SRAM XDR TECHNOLOGY MAY ONLY BE USED WITH AN APPROVED LICENSE AGREEMENT
 DRIVER BODY MUST BE MARKED WITH XDR LOGO
 VISIT WWW.XDDRIVERBODY.COM

FORMAT: A3	SCALE: 2:1	SHEET: 2 / 2
LIFECYCLE STATUS Released	SRAM. CONFIDENTIAL - THIS DRAWING CONTAINS INFORMATION THAT IS PROPRIETARY TO SRAM CORPORATION AND MAY NOT BE DISCLOSED WITHOUT PERMISSION.	
DRAWING NAME / DESCRIPTION SRAM DRIVER BODY STANDARD XDR		
DRAWING NUMBER 90-2415-189-000		VERSION B.3